



Oven shown with optional stainless steel mantle.

Hearth Capacity	
8" pizzas	8 - 10
10" pizzas	5 - 6
12" pizzas	4 - 5
16" pizzas	1 - 2

Optional Accessories

- Stainless Steel or Black Granite Mantle
- Facade Extension Packages
- Stainless Steel Oven Tool Set (with stainless steel hangers)
- Custom Finishes (stucco-ready, stainless steel, copper)
- Stack-Mounted Exhaust Fan
- Custom Oven-Mounted Exhaust Hood

The Mt. Chuckanut Radiant Flame, Gas-Fired Oven with Wood Burning Option

The Mt. Chuckanut radiant flame, gas-fired oven features a standard door opening 20 inches wide x 10 inches high. The inside diameter of the oven floor is 37 inches, resulting in a 9-square-foot cooking surface. The oven is ETL Listed for installation with a 1 inch side clearance to combustible building materials.

The dense, high-temperature ceramic formulation of which the hearth and dome are cast creates a "deep heat sink" within the chamber of the oven. The oven is heated by an easily adjustable (68,000 BTU max.) wall of radiant flame located at the rear of the cooking chamber. The user also has the option of building a small wood fire on either side of the cooking chamber for additional ambience and flavor.

The 650-pound, monolithic, cast-ceramic floor sits on 4 inches of rigid insulation and is poured to a thickness of 4 inches. The 700-pound, monolithic dome is cast to a thickness of 4 inches. The hearth and dome are connected and supported by a carefully tensioned stainless steel exoskeleton, which ensures structural integrity and long life. The body of the oven rests on a 10-gauge steel pan bolted to a heavy-duty, 3 inch angle iron stand. The oven is wrapped with at least 2 inches of spun ceramic fiber insulation and enclosed (top and sides) with 16-gauge galvanized steel. The oven arrives completely assembled and ready to set in place.

The Mt. Chuckanut is ETL and ETL Sanitation Listed. The oven can be manufactured to burn either propane or natural gas; *this must be specified at the time of order.*

The Mt. Chuckanut can be directly vented through a power-ventilated, grease-duct-rated chimney or can be vented using a Listed Type 1 exhaust hood or one constructed in accordance with all relevant local and national codes. The oven must be vented as a solid fuel appliance. The oven should be vented in accordance with all relevant local and national codes, and in a manner acceptable to the authority having jurisdiction.

Wood Stone's Radiant Flame gas ovens *can be* manufactured to be fully and easily convertible to a Dual Temperature gas oven (*this must be specified at time of order.*)



Wood Stone

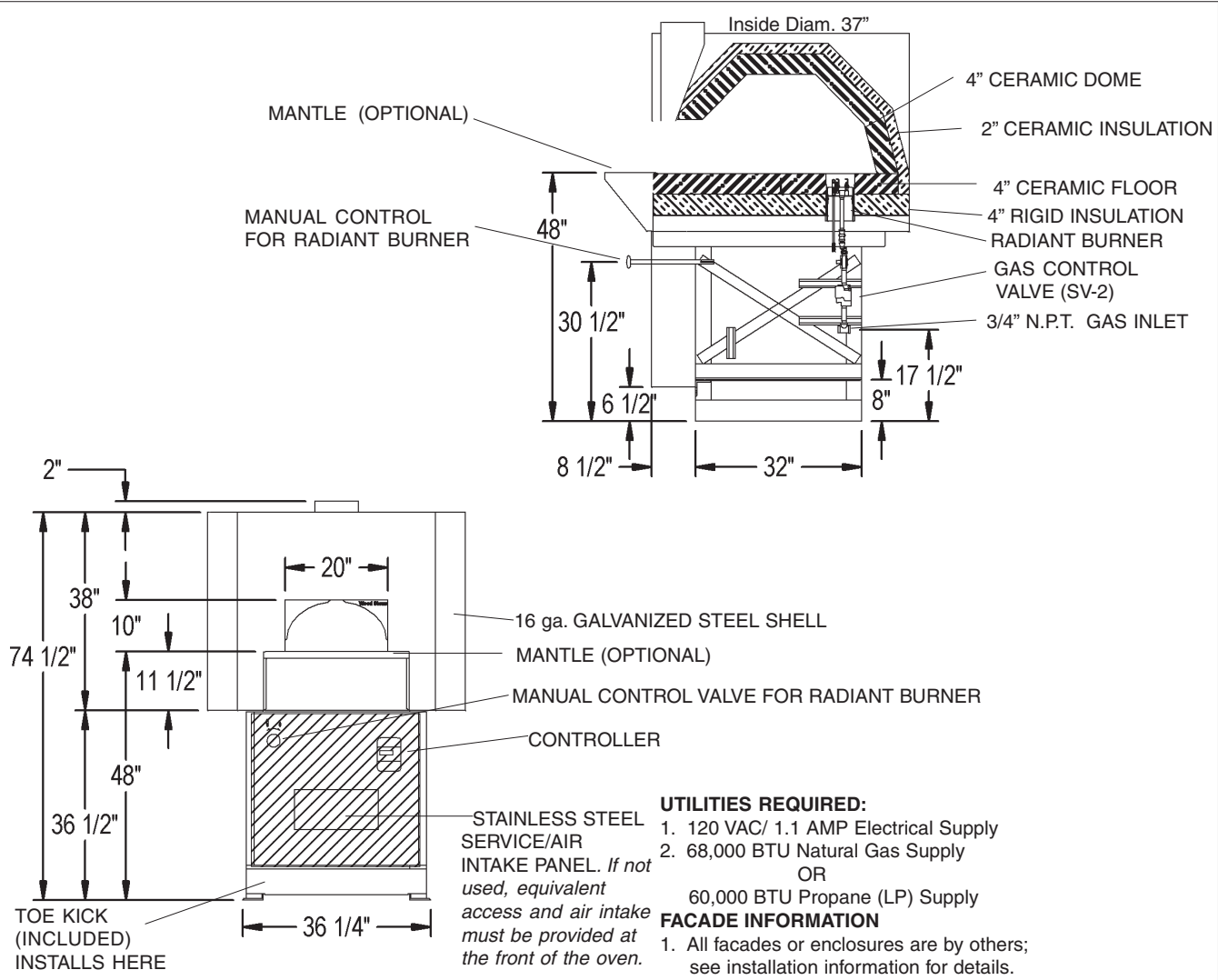
1801 W. Bakerview Rd. Corporation
Bellingham, WA 98226

Toll Free (800) 988-8103
Tel (360) 650-1111
Fax (360) 650-1166

Mt.Chuckanut

Radiant Flame Gas-Fired Oven

Model
WS-MS-4-RFG-W



UTILITIES REQUIRED:

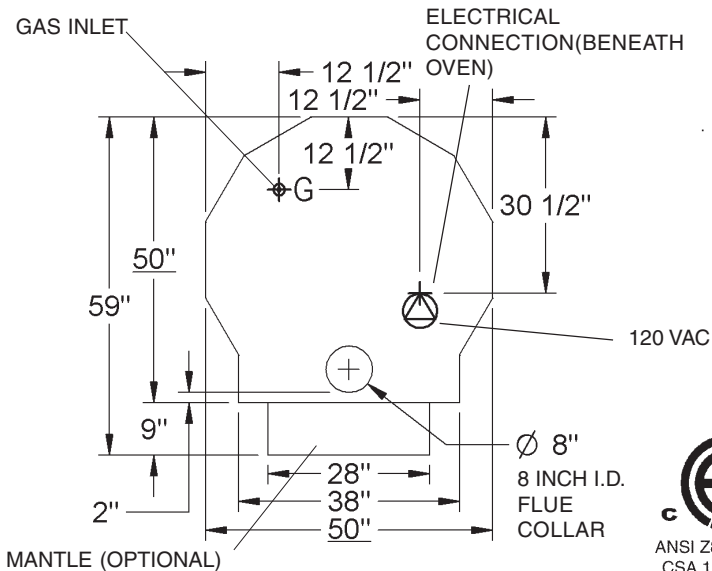
1. 120 VAC/ 1.1 AMP Electrical Supply
2. 68,000 BTU Natural Gas Supply
OR
60,000 BTU Propane (LP) Supply

FACADE INFORMATION

1. All facades or enclosures are by others; see installation information for details.
2. Any facade or enclosure below the mantle must allow the following:
 - a) Unobstructed access 16 inches to each side of centerline for removal of service / intake panel.
 - b) Easy access to all controls.
 - c) Sufficient combustion air for gas burner; see installation information for details.

VENTING INFORMATION

The Mt. Chuckanut can be directly vented through a power-ventilated, grease-duct-rated chimney or can be vented using a Listed Type 1 exhaust hood or one constructed in accordance with all relevant local and national codes. The oven must be vented as a solid fuel appliance. The oven should be vented in accordance with all relevant local and national codes, and in a manner acceptable to the authority having jurisdiction.



WoodStone Corporation
 1801 W. Bakerview Rd.
 Bellingham, WA 98226
 Toll Free (800) 988-8103
 Tel (360) 650-1111
 Fax (360) 650-1166

Unit Shipping Weight: 2,400 lbs.

An ongoing program of product improvement may require us to change specifications without notice.

Revised October 2007