

# Wood Stone

## Fire Deck

Gas-fired  
Stone Hearth Deck Oven

Job Name: \_\_\_\_\_  
Model: WS-FD-9660  
Item #: \_\_\_\_\_



### The Wood Stone Fire Deck 9660

The Fire Deck 9660 features a standard door opening 54 inches wide x 10 inches high. The cooking surface is 72 inches wide, and 46 inches deep, resulting in 22 square feet of usable deck space. The dense, high temperature ceramic formulation of which the hearth and dome are cast creates a "deep heat sink" within the chamber of the oven. The Fire Deck is unique among deck ovens in that it can easily accommodate six 20" pizzas, or 4 to 5 full sized sheet pans.

The Fire Deck is available in a variety of burner and fuel configurations. The standard unit has two manually adjustable walls of radiant flame (one at each end), as well as a thermostatically controlled gas infrared burner beneath the oven deck. Alternatively, either of the radiant flame burners can be omitted to accommodate the use of wood as a fuel source. The ovens are constructed so that future addition of any burner (previously omitted) is possible.

The 1,600-pound, monolithic, cast-ceramic floor sits on 4 inches of rigid insulation and is poured to a thickness of 4 inches. The 2,050-pound, monolithic dome is also cast to a thickness of 4 inches. The hearth and dome are connected by a carefully tensioned stainless steel exoskeleton, which ensures structural integrity and long life. The oven's ceramic dome is wrapped with at least 2 inches of spun ceramic fiber insulation and enclosed (top and sides) with 16-gauge galvanized steel. The body of the oven rests on a 10-gauge steel pan welded to a heavy-duty frame. The oven arrives completely assembled and may be accompanied by a set of temporary rigging casters (optional) to aid in moving the oven into place.

The combustion products of the gas and/or wood used to fuel the oven vent through a 12 inch I.D. flue collar located above the doorway. The Fire Deck 9660 can be directly vented through a power-ventilated building heating appliance chimney, also listed as a grease duct, or it can be vented using a Listed Type 1 exhaust hood or one constructed in accordance with all relevant local and national codes.

Hearth Capacity	
8" pizzas	40-44
10" pizzas	24-28
12" pizzas	15-20
16" pizzas	8-10
18" or 20" pizzas	6

### Optional Accessories

- **Stainless Steel Storage Boxes**
- **Stainless Steel Oven Tool Set (with stainless steel hangers)**
- **Stack-Mounted Exhaust Fan**
- **Custom Oven-Mounted Exhaust Hood**
- **Stainless Steel or Powder Coated Finishes Available for the Oven Enclosure**
- **Temporary Rigging Casters**
- **Configured for Wood Burning**  
(Wood burning models must be vented for solid-fuel)
- **Prepared for facade application**
- **Wood Stone also carries a full line of accessories for stone-hearth cooking**



## Wood Stone

1801 W. Bakerview Rd. Corporation  
Bellingham, WA 98226 USA

Toll Free (800) 988-8103  
Tel (360) 650-1111  
Fax (360) 650-1166

An ongoing program of product improvement may require us to change specifications without notice.

Revised October 2007

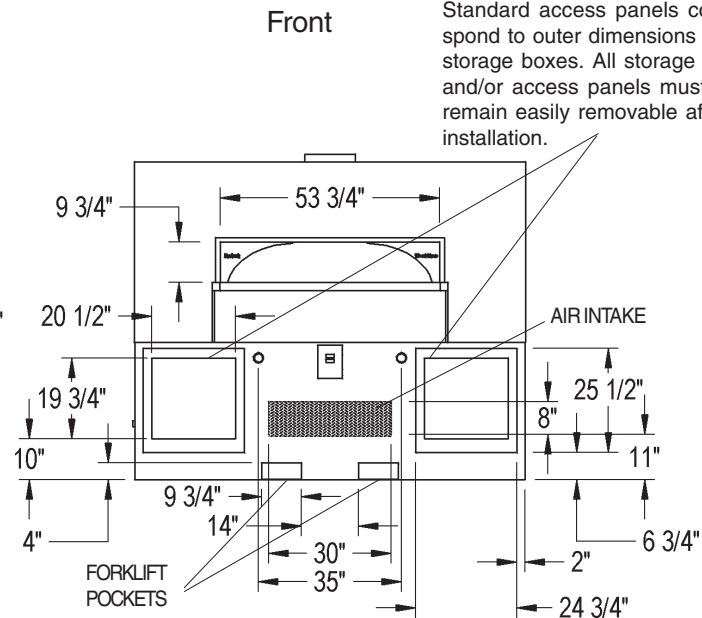
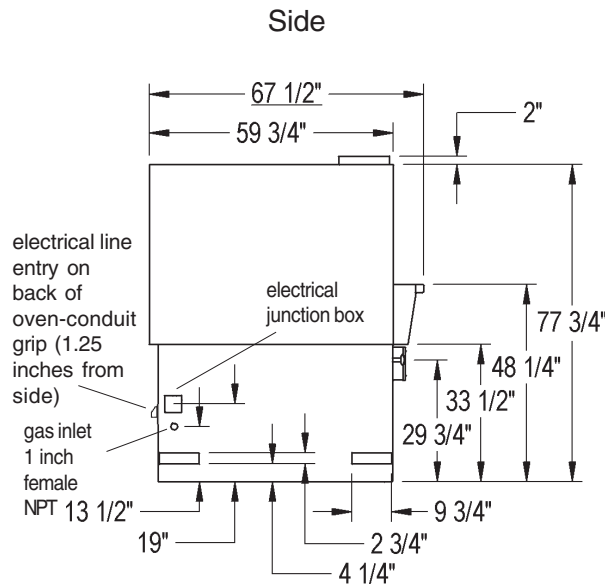
Call Us Toll Free 1-800-988-8103 [www.woodstone-corp.com](http://www.woodstone-corp.com)

# Fire Deck

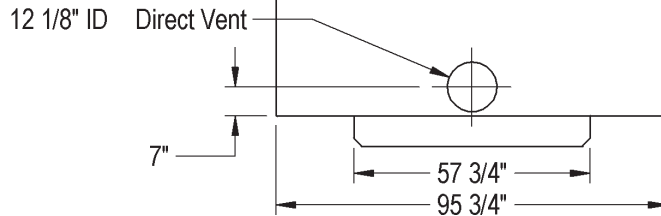
Stone Hearth, Multi-Fuel,  
Baking and Roasting Oven

Model

# WS-FD-9660



Optional storage boxes shown. Standard access panels correspond to outer dimensions of the storage boxes. All storage boxes and/or access panels must remain easily removable after installation.



## Guide to Fire Deck Model #s

Model #	Underfloor IR Burner	Left-side Flame Burner	Right-side Flame Burner	Wood Fire Optional	Wood Fire Mandatory	Natural Gas	Liquid Propane
WS-FD-9660-RFG-L/R-IR	X	X	X			NG	LP
WS-FD-9660-RFG-L-IR	X	X		-W		NG	LP
WS-FD-9660-RFG-R-IR	X		X	-W		NG	LP
WS-FD-9660-W-IR	X				X	NG	LP
WS-FD-9660-W					X		

### UTILITIES REQUIRED

- 120 VAC/4 Amp electrical connection.
- 350,000 BTU Natural Gas supply OR 350,000 BTU Propane (LP) supply  
*The oven's gas inlet is 1" N.P.T. Female*

### VENTING INFORMATION

Listed for installation with a Wood Stone exhaust hood or a Type 1 hood constructed and installed in accordance with all applicable local and national codes; **OR** a power ventilated, building heating appliance chimney, also listed as a grease duct, connected directly to the 12 inch I.D. oven flue collar. See installation information for details.

**IMPORTANT** - Ovens with model numbers containing a W should be vented as a solid-fuel appliance.



## Wood Stone Corporation

1801 W. Bakerview Rd. Bellingham, WA 98226 USA

Toll Free (800) 988-8103

Tel (360) 650-1111

Fax (360) 650-1166

**Unit Shipping Weight: 5,700 lbs.**

An ongoing program of product improvement may require us to change specifications without notice.

Revised October 2007

**Call Us Toll Free 1-800-988-8103 www.woodstone-corp.com**