

# Wood Stone Fire Deck

Gas-fired, or Multi-Fuel  
Stone Hearth Deck Oven

Job Name: \_\_\_\_\_  
 Model: WS-FD-8645  
 Item #: \_\_\_\_\_



Shown with optional storage boxes.

Hearth Capacity	
8" pizzas	20
10" pizzas	14
12" pizzas	10
16" pizzas	6

## The Wood Stone Fire Deck

The Fire Deck features a standard door opening 56 inches wide x 10 inches high. The cooking surface is 58 inches wide, and 38 inches deep, resulting in 15 square feet of usable deck space. The dense, high temperature ceramic formulation of which the hearth and dome are cast creates a "deep heat sink" within the chamber of the oven. The chef is protected from the heat of the chamber by the ceramic glass door/heat shield. The heat shield glides smoothly and easily using a simple counterweight, and can be safely left in any position. Whether it is open or closed, the operator and the customers can see into the brightly illuminated chamber. The Fire Deck is unique among deck ovens in that the oven

operates efficiently with the door open or closed. The Fire Deck is available in a variety of burner and fuel configurations. The standard unit has two manually adjustable walls of radiant flame (one at each end), as well as a thermostatically controlled gas infrared burner beneath the oven deck. Alternatively either or both of the radiant flame burners can be omitted to accommodate the use of wood as a fuel source. The ovens are constructed so that future addition of any burner (previously omitted) is possible.

The 1,200-pound, monolithic, cast-ceramic floor sits on 4 inches of rigid insulation and is poured to a thickness of 4 inches. The 1,300-pound, monolithic dome is also cast to a thickness of 4 inches. The hearth and dome are connected by a carefully tensioned stainless steel exoskeleton, which ensures structural integrity and long life. The oven's ceramic dome is wrapped with at least 2 inches of spun ceramic fiber insulation and enclosed (top and sides) with 16-gauge steel. The body of the oven rests on a 10-gauge steel pan welded to a heavy-duty frame. Stainless steel storage compartments (shown) are optional and can be provided in the support frame. The oven arrives completely assembled and may be accompanied by a set of temporary rigging casters (optional) to aid in moving the oven into place.

The Fire Deck should be vented using a Type 1 exhaust hood constructed and installed in accordance all relevant local and national codes. Fire Deck models with a -W in the model number must be vented for solid-fuel. The oven is approved to be installed with a minimum of 1 inch side clearance to combustible construction.

## Optional Accessories

- **Stainless Steel Storage Boxes**
- **Stainless Steel Oven Tool Set (with stainless steel hangers)**
- **Stack-Mounted Exhaust Fan**
- **Custom Oven-Mounted Exhaust Hood**
- **Temporary Rigging Casters**
- **Configured for Wood Burning**  
(Wood burning models must be vented for solid-fuel)
- **Prepared for facade application**
- **Wood Stone also carries a full line of accessories for stone-hearth cooking**



**Wood Stone** Corporation  
 1801 W. Bakerview Rd.  
 Bellingham, WA 98226 USA  
 Toll Free (800) 988-8103  
 Tel (360) 650-1111  
 Fax (360) 650-1166

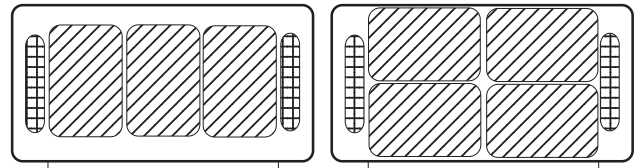
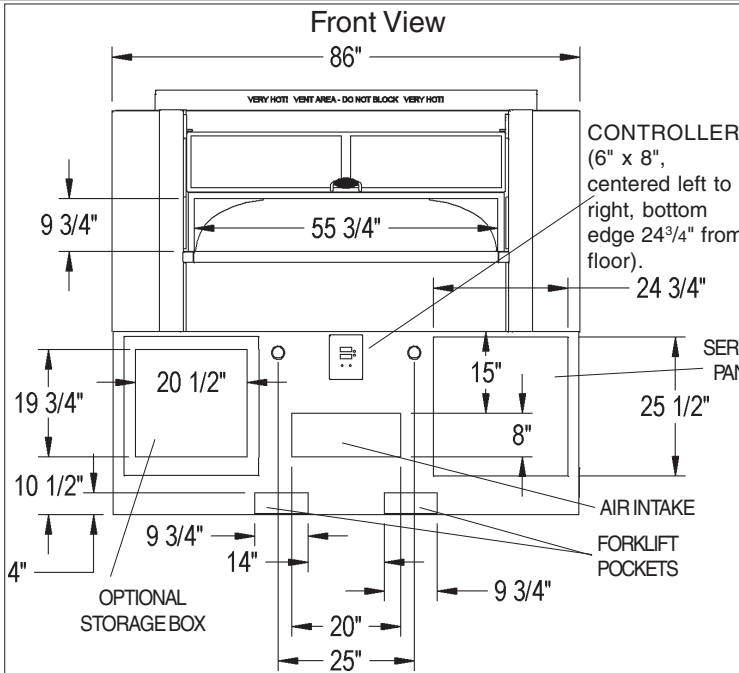
An ongoing program of product improvement may require us to change specifications without notice. Revised October 2007

# Fire Deck

Stone Hearth, Multi-Fuel,  
Baking and Roasting Oven

Model

WS-FD-8645

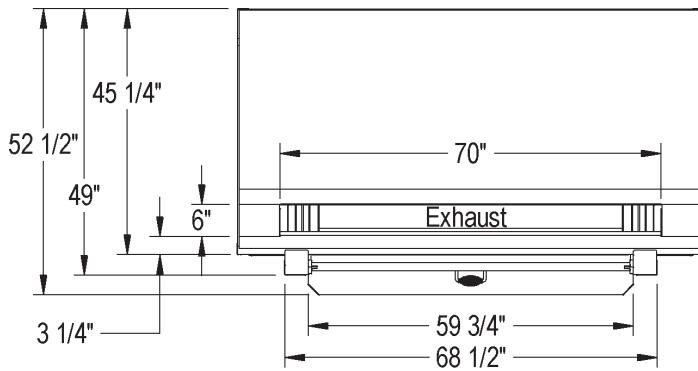


Graphic representations of oven interior showing possible arrangements of 3 and 4 full-sized sheet pans (18 x 26) and possible locations of Radiant Flame Burners

### Guide to Fire Deck Model #s

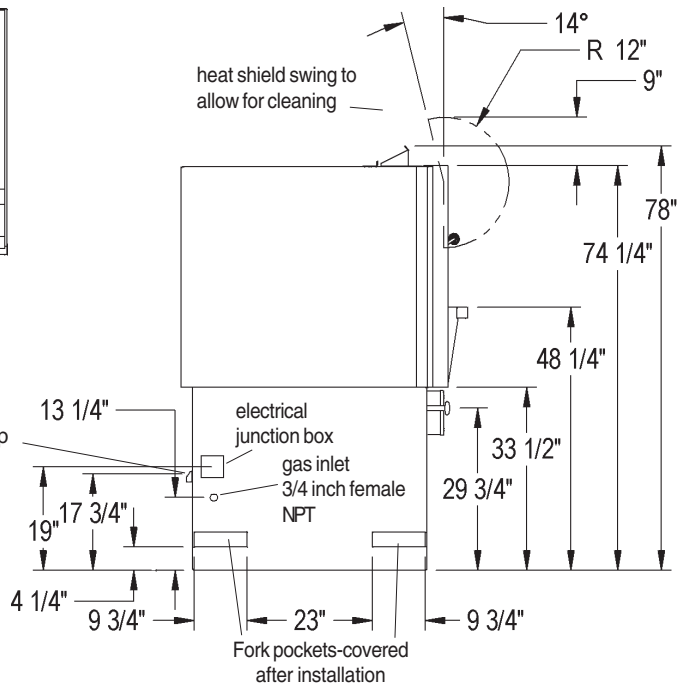
	Underfloor IR Burner	Left-side Flame Burner	Right-side Flame Burner	Wood Fire Optional	Wood Fire Mandatory	Natural Gas	Liquid Propane
WS-FD-8645-RFG-L/R-IR	X	X	X			NG	LP
WS-FD-8645-RFG-L-IR	X	X		-W		NG	LP
WS-FD-8645-RFG-R-IR	X		X	-W		NG	LP
WS-FD-8645-W-IR	X				X	NG	LP
WS-FD-8645-W					X		

### Top View



electrical line entry on back of oven-conduit grip (1.25 inches from side)

### Side View



#### UTILITIES REQUIRED

- 120 VAC/ 4 AMP electrical connection
- 220,000 BTU Natural Gas supply  
OR  
200,000 BTU Propane (LP) supply  
The oven's gas inlet is 3/4" N.P.T. Female

#### VENTING INFORMATION

Intended for installation with a Type 1 exhaust hood constructed and installed in accordance with all relevant local and national codes.

**Unit Shipping Weight: 4,500 lbs.**

An ongoing program of product improvement may require us to change specifications without notice.



**Wood Stone** Corporation

1801 W. Bakerview Rd.  
Bellingham, WA 98226 USA

Toll Free (800) 988-8103

Tel (360) 650-1111

Fax (360) 650-1166

Revised October 2007

**Call Us Toll Free 1-800-988-8103 www.woodstone-corp.com**