

# Wood Stone

## DUCK OVEN

Dual Burner Stone Hearth Oven



**Job Name**

**Model** WS-DO-5048-RFG-LR

**Item#**

**Fuel Type** Gas-Fired

The Wood Stone DO-5048 was designed from the ground up to be a high quality, high production, stone hearth duck oven. It has a 3-inch thick monolithic, cast-ceramic floor similar to our Bistro Series ovens. This oven also incorporates a new 3-inch thick multi-piece wall design, developed specifically for this application. This new wall design supports the 3-inch thick monolithic, cast-ceramic ceiling. The combined mass of the ceramic floor, wall and ceiling structures creates a "deep heat sink" within the chamber of the oven. The oven sits on a heavy-duty frame and includes an easily removable grease collection system. The Duck Oven is equipped with specially-designed double doors that allow easy loading and unloading of the oven. The oven is ETL Listed with a 1-inch side clearance to combustible construction.

The ceramic interior is heated by two powerful, independently adjustable radiant burners located on each side of the oven chamber. Each burner is controlled exclusively by the chef. The heat distribution in the oven can be adjusted to meet the needs of a variety of menu items. This oven can be configured to burn either Natural Gas or Propane - gas type should be specified at the time of order.

The Wood Stone Duck Oven must be vented with a Listed Type 1 exhaust hood or one constructed in accordance with all relevant local and national codes. The byproducts of combustion and cooking vapors exhaust through the doorway of the oven. The oven must be vented in accordance with all relevant local and national codes, and in a manner acceptable to the authority having jurisdiction.

### Hearth Capacity

Cantonese Style Ducks	8
Peking Style Ducks	6

### OPTIONAL ACCESSORIES

- Stainless Steel Oven Tool Set (with stainless steel hangers)
- Viewing Windows
- Fire Box to allow for burning small amounts of wood or charcoal



**Intertek**  
ANSI Z83.11b-2006  
CSA 1.8b-2006



**Intertek**  
ANSI/NSF STD 4

## Wood Stone

An ongoing program of product improvement may require us to change specifications without notice.  
**Revised July 2011**

### WOOD STONE CORPORATION

1801 W. Bakerview Rd.  
Bellingham, WA 98226 USA

Tel +1(360) 650-1111  
Fax +1(360) 650-1166

[info@woodstone-corp.com](mailto:info@woodstone-corp.com) or visit [www.woodstone-corp.com](http://www.woodstone-corp.com)



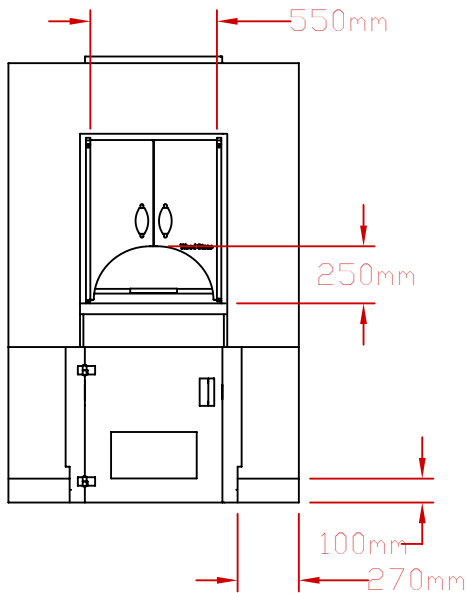
# DUCK OVEN

Dual Burner Stone Hearth Oven

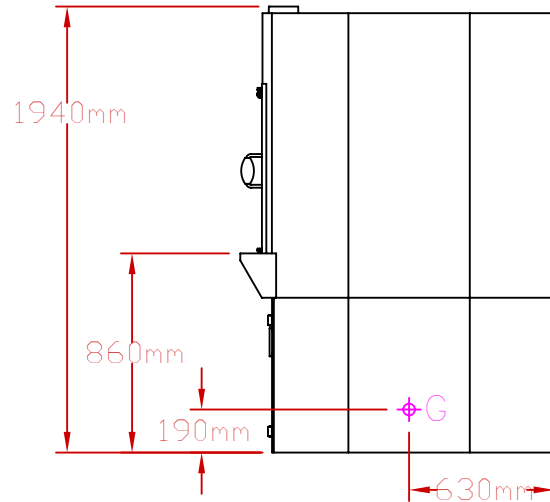
Model

WS-DO-5048-RFG

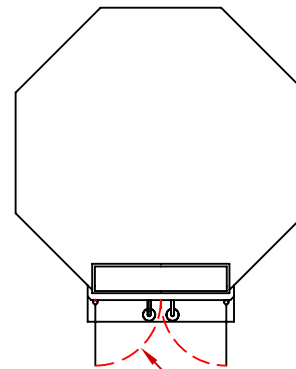
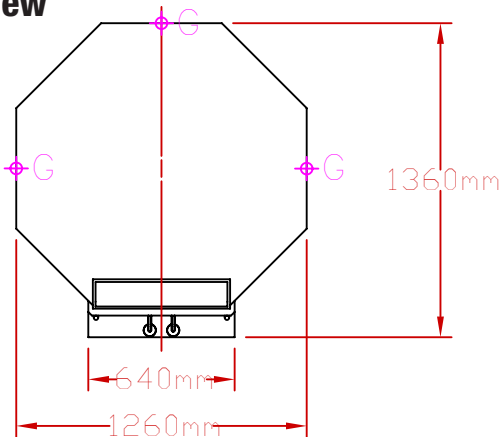
### Front View



### Side View



### Top View



#### UTILITIES SPECIFICATIONS

Gas-3/4 inch (19 mm) gas inlet (female threaded)  
100,000 BTU (29.3 kW) Natural Gas Supply  
or  
100,000 BTU (29.3 kW) Propane (LP) Supply

**Unit Shipping Weight:**  
**1542 kg**

#### Electrical

Specify AC Voltage, 2 amp, 50/60 Hz  
All utility connections made on the back of the oven control box. Remove front or rear panel for access, use utility knockouts (provided) to route gas and electrical supplies.

#### VENTING INFORMATION

The Wood Stone Duck Oven must be vented with a Listed Type 1 exhaust hood or one constructed in accordance with all relevant local and national codes. The byproducts of combustion and cooking vapors exhaust through the doorway of the oven. The oven must be vented in accordance with all relevant local and national codes, and in a manner acceptable to the authority having jurisdiction.



An ongoing program of product improvement may require us to change specifications without notice.  
Revised July 2011

#### WOOD STONE CORPORATION

1801 W. Bakerview Rd.  
Bellingham, WA 98226 USA

Tel +1(360) 650-1111  
Fax +1(360) 650-1166

info@woodstone-corp.com or visit [www.woodstone-corp.com](http://www.woodstone-corp.com)

Intertek  
ANSI Z83.11b-2006  
CSA 1.8b-2006

Intertek  
ANSI/NSF STD 4