

# Wood Stone



## DUCK OVEN

Dual Burner Stone Hearth Oven



<b>Job Name</b>	
<b>Model</b>	WS-DO-5048-RFG-LR
<b>Item#</b>	
<b>Fuel Type</b>	<b>Gas-Fired</b>

The Wood Stone DO-5048 was designed from the ground up to be a high quality, high production, stone hearth duck oven. It has a 3 inch thick monolithic, cast-ceramic floor similar to our Bistro Series ovens. This oven also incorporates a new 3 inch thick multi-piece wall design, developed specifically for this application. This new wall design supports the 3 inch thick monolithic, cast-ceramic ceiling. The combined mass of the ceramic floor, wall and ceiling structures creates a “deep heat sink” within the chamber of the oven. Two viewing windows at the rear of the oven are standard. The oven sits on a heavy-duty frame and includes an easily removable grease collection system. The Duck Oven is provided with a specially designed doorway that can be raised or lowered for easier loading and unloading of the oven. The oven is ETL Listed with a 1 inch side clearance to combustible construction.

The ceramic interior is heated by two powerful, independently adjustable radiant burners located on each side of the oven chamber. Each burner is controlled exclusively by the chef. The heat distribution in the oven can be adjusted to meet the needs of a variety of menu items. This oven can be configured to burn either Natural Gas or Propane - gas type should be specified at the time of order.

The Wood Stone Duck Oven must be vented with a Listed Type 1 exhaust hood or one constructed in accordance with all relevant local and national codes. The byproducts of combustion and cooking vapors exhaust through the doorway of the oven. The oven must be vented in accordance with all relevant local and national codes, and in a manner acceptable to the authority having jurisdiction.

### Hearth Capacity

Cantonese Style Ducks	8
Peking Style Ducks	6

### OPTIONAL ACCESSORIES

- Stainless Steel Oven Tool Set (with stainless steel hangers)
- Wood Stone also manufactures a full line of accessories for stone hearth cooking



**Wood Stone**

An ongoing program of product improvement may require us to change specifications without notice.  
Revised October 2009

### WOOD STONE CORPORATION

1801 W. Bakerview Rd.  
Bellingham, WA 98226 USA

Toll Free (800) 988-8103  
Tel (360) 650-1111  
Fax (360) 650-1166

[info@woodstone-corp.com](mailto:info@woodstone-corp.com) or visit [www.woodstone-corp.com](http://www.woodstone-corp.com)

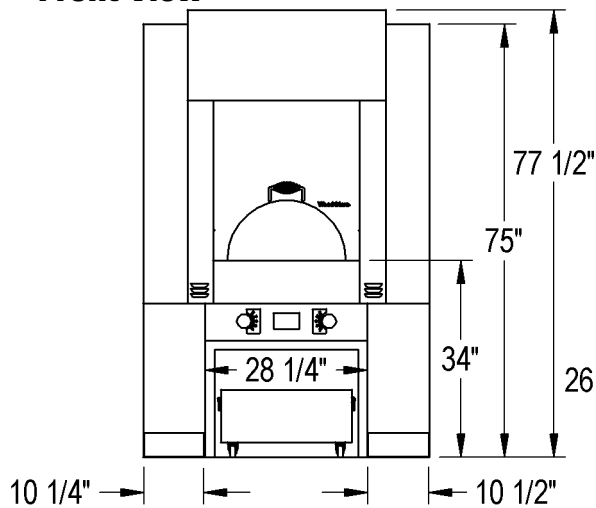


# DUCK OVEN

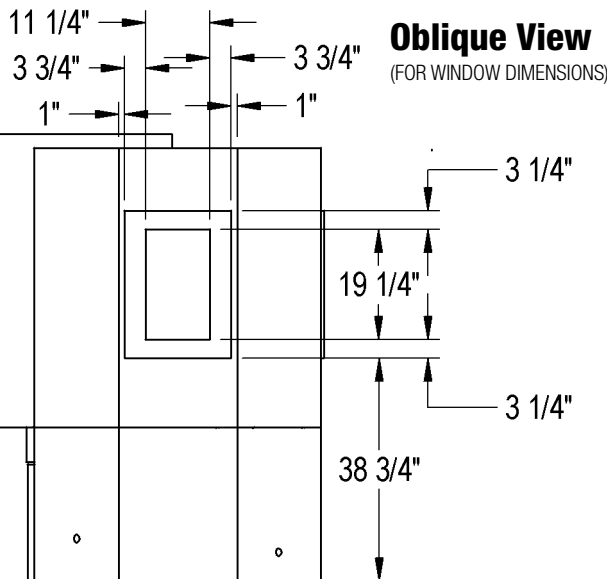
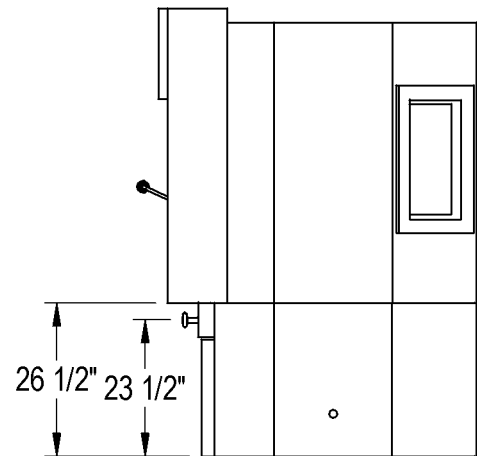
Dual Burner Stone Hearth Oven

Model  
WS-DO-5048-RFG

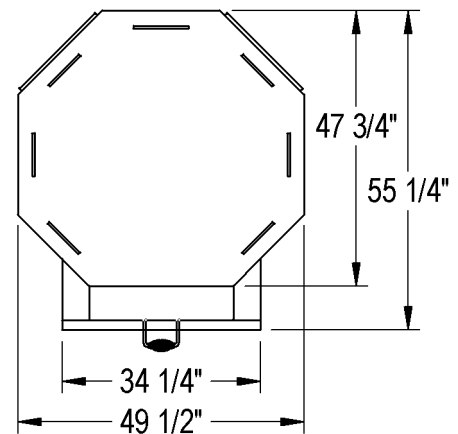
### Front View



### Side View



### Top View



### UTILITIES SPECIFICATIONS

Gas-3/4 inch gas inlet (female threaded)  
100,000 BTU Natural Gas Supply OR  
100,000 BTU Propane (LP) Supply

**Unit Shipping Weight:**  
**3,400 lbs.**

### Electrical

120 VAC, 2 amp, 50/60 Hz  
All utility connections made on the back of the oven control box. Remove front or rear panel for access, use utility knockouts (provided) to route gas and electrical supplies.

### VENTING INFORMATION

The WS-DO-5048 models must be vented using a Listed Type 1 exhaust hood, or one constructed in accordance with NFPA 96 and all relevant local and national codes. The oven must be vented in accordance with all relevant local and national codes, and in a manner acceptable to the authority having jurisdiction.



An ongoing program of product improvement may require us to change specifications without notice.  
Revised October 2009

### WOOD STONE CORPORATION

1801 W. Bakerview Rd.  
Bellingham, WA 98226 USA

Toll Free (800) 988-8103

Tel (360) 650-1111

Fax (360) 650-1166

[info@woodstone-corp.com](mailto:info@woodstone-corp.com) or visit [www.woodstone-corp.com](http://www.woodstone-corp.com)