

WoodStone



Oven shown with optional stainless steel mantle.

Hearth Capacity

200 mm pizzas	8-10
250 mm pizzas	5-6
300 mm pizzas	4
400 mm pizzas	1-2

Assuming 5-minute cook times, the approximate maximum hourly production capacity can be calculated by multiplying the above numbers by 12.

Note: Highlighted capacities are considered an operational challenge.

OPTIONAL ACCESSORIES

- Doorway and Service Panel Extensions
- Stainless Steel or Black Granite Mantles
- Stainless Steel Oven Tools
- Custom Finishes
- Exhaust Fan
- Exhaust Hood
- Wood Burning Option
(Wood burning models must be vented for solid fuel)
- Custom Wood Burning Accessories

MT. CHUCKANUT 4'

Stone Hearth Oven



Job Name	
Model	WS-MS-4-RFG-IR-CE
Item#	
Fuel Type	Dual Burner, Gas-Fired

The Mt. Chuckanut Dual Burner, Gas-Fired oven features a standard door opening 510 mm wide x 260 mm high. The inside diameter of the oven floor is 940 mm, resulting in a 9-square-foot cooking surface. The oven approved for installation with a 25 mm side clearance to combustible building materials.

The dense, high-temperature ceramic formulation of which the hearth and dome are cast creates a "deep heat sink" within the chamber of the oven. The oven is primarily heated by an easily adjustable (20-kW max.) wall of radiant flame located at the rear of the cooking chamber. A 13.8-kW, thermostatically controlled infrared burner mounted under the floor ensures constant deck temperatures. The combined effect of these heat sources makes the Mt. Chuckanut a very powerful and responsive stone hearth oven.

The 295-Kg, monolithic, 100 mm thick cast-ceramic floor sits on 100 mm of rigid insulation. The 320-Kg, monolithic dome is cast to a thickness of at least 100 mm. The hearth and dome are connected and supported by a carefully tensioned steel exoskeleton, which ensures structural integrity and long life. The body of the oven rests on a 12-gauge steel pan bolted to a heavy-duty, 75 mm angle iron stand. The oven is wrapped with at least 50 mm of spun ceramic fiber insulation and enclosed (top and sides) with 16-gauge galvanized steel. The oven arrives completely assembled and ready to set in place.

The Mt. Chuckanut can be manufactured to burn either propane or natural gas; this must be specified at the time of order.

The Mt. Chuckanut vents through a 203 mm O.D. flue collar located above the doorway. The oven must be vented as a Type A or Type B₁₁ appliance, and in accordance with all applicable codes

NATURAL GAS (METHANE)

I_{2H(20)} for use in: AT, DK, ES, FI, IE, IT, PT, GB, SE, CH, GR, CR

I_{2E(20)} for use in DE

I_{2L(25)} for use in NL

PROPANE and PROPANE BLENDS

I_{3+ (28-30/37)} for use in: IE, ES, FR, IT, PT, BE, CH, CR, and GB

I_{3P(30/37/50)} for use in: DE, IE, ES, FR, PT, NL, CH and GB

I_{3B/P (28-30/37)} for use in: DE, SE, AT, DK, FI, NL, CH, NO, FR

I_{3P (30/37/50)} for use in: BE, DE, ES, FR, IR, IE, NL, PT, GB, IS, GR, CY, EE, HU, LV, MT, SI, CH

I_{3B/P(50)} for use in: DE, SE, AT, DK, FI, NL, CH, FR

I_{2ELL} for use in DE



359BN308



An ongoing program of product improvement may require us to change specifications without notice.
Revised July 2010

WOOD STONE CORPORATION

1801 W. Bakerview Rd.

Bellingham, WA 98226 USA

Tel +1(360) 650-1111

Fax +1(360) 650-1166

info@woodstone-corp.com or visit www.woodstone-corp.com

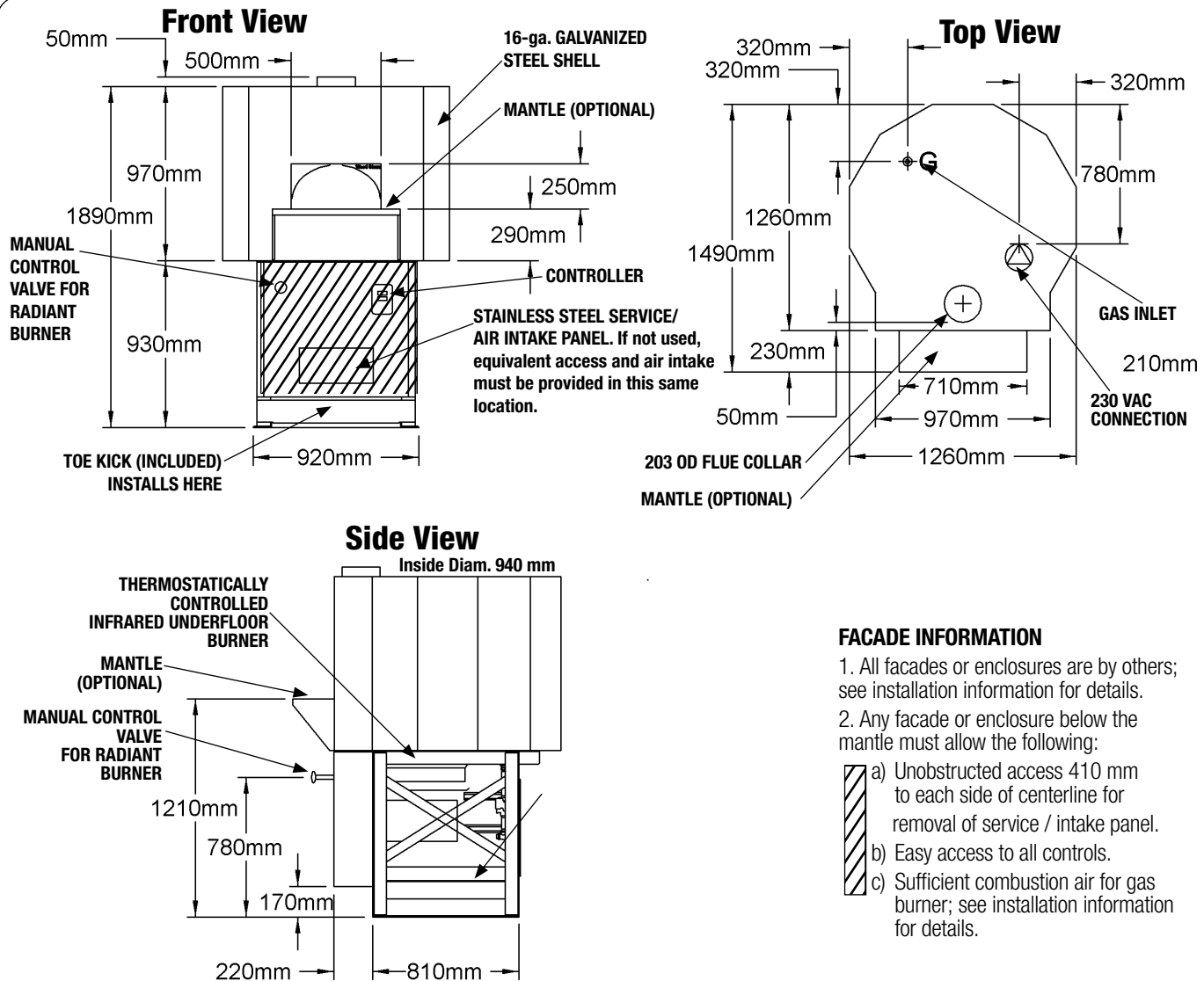


MT. CHUCKANUT 4'

Stone Hearth Oven

Model

WS-MS-4-RFG-IR-CE



FACADE INFORMATION

- All facades or enclosures are by others; see installation information for details.
- Any facade or enclosure below the mantle must allow the following:

- a) Unobstructed access 410 mm to each side of centerline for removal of service / intake panel.
- b) Easy access to all controls.
- c) Sufficient combustion air for gas burner; see installation information for details.

UTILITIES REQUIRED:

230-VAC/ 0.5-AMP Electrical Supply
The oven's gas inlet is 19 mm B.P.T. Female

VENTING INFORMATION

The Mt. Chuckanut vents through a 203 mm (O.D.) flue collar located above the doorway. The oven must be vented as a Type A or Type B₁₁ appliance, and in accordance with all applicable codes. For ovens that will be direct connected, order the optional flue adapter.

En 437 Gas Group	I _{2H}	I _{2E} and I _{2L}	I ₃₊	I _{3B/P(30)}	I _{B/P(50)}	I _{3P}
Inlet Pressure (mbar)	20	25	28-30/37/50	30	50	30/37/50

	Declared Input (kW)			
	I _{2H} + I _{2L} and I _{2E}	I _{3+(28-30/37/50)}	I _{3B/P(30-50)}	I _{3P(30/37/50)}
WS-MS-4-RFG-IR-CE	33.7	29.9	29.9	29.9

Unit Shipping Weight: 1,100 Kg



An ongoing program of product improvement may require us to change specifications without notice.
Revised July 2010

WOOD STONE CORPORATION

1801 W. Bakerview Rd.
Bellingham, WA 98226 USA

Tel +1(360) 650-1111
Fax +1(360) 650-1166

info@woodstone-corp.com or visit www.woodstone-corp.com